



ALBURY BOTANIC GARDENS DRAFT MASTER PLAN

SUMMARY OF COMMUNITY REQUESTS

- Café
- More native and indigenous plants (very high demand)
- More events (some concerns)
- Link to the Murray
- Engage with Traditional Custodians
- More toilets (for peak times)
- Pedestrian crossings
- More parking
- More accessible features (e.g. lawn access, tables, drinking fountains, seats at entrances)
- More education opportunities
- More information on plants
- Food for home gardeners
- Cater to very young children in the Children's Garden
- Supports relocation of depot
- More colour in shrub layer
- Allow dogs in the Gardens (small number, not everyone)

ADDITIONAL STAKEHOLDER REQUESTS

- Elm Avenue replacement and community awareness
- Removal of wishing well (recognition of Rotary elsewhere)
- Managing impact of events
- Reducing unnecessary maintenance
- Upgrade irrigation
- Boundary gardens too open
- Tree protection and replacement

ALBURY BOTANIC GARDENS DRAFT MASTER PLAN PROCESS





Albury's Garden

The Albury Botanic Gardens lie at the heart of Albury, both geographically and socially. The Gardens are seen as a green refuge for people of all ages and backgrounds. They are the location of many personal and community events; for private milestones, public entertainment, education and simply being with family and friends. The Gardens act as a central element in town life, a green oasis in the heart of a growing rural city.



A Botanic Garden

Albury Botanic Gardens plays a role in plant protection, conservation and education. Their role as a botanic garden – a place to learn about and admire plants – is embraced by the public and staff. Opportunities to learn are provided in an impressive number of ways. The potential for the Gardens to promote the use of native and indigenous plants is also desired. The collections of plants are diverse, beautiful and lovingly nurtured by a respected team of horticulturalists for the benefit of the environment and all who visit.



A Historic Garden

The heritage character of the Gardens is greatly valued, thanks to the well preserved and exquisitely realised *gardenesque* / *picturesque* style and its magnificent canopy of historic trees. To this day the Gardens are maintained to an exceptionally high standard. Albury proudly wears its badge of honour as being NSW's oldest remaining botanic garden after Sydney.



Everyone's Garden

Albury Botanic Gardens appeals to people across a range of ages, abilities, cultures and interests, this being central to their popularity. The Gardens provide a safe and inviting place for families, with the creation of the Children's Garden exemplifying this. There is also a desire to reflect Traditional Custodian knowledge in the Gardens. For the people of Albury, the Gardens are known as a place for gathering, marking milestones, learning and being entertained, all within a lush, inclusive and peaceful environment. The Gardens encourage the exploration of nature and create a green heart for the community.



A Peaceful Garden

The Gardens are a place of respite. Enhanced by lush surroundings, they have a protected, inward focus and curving lawns that provide moments of seclusion. The Gardens are a place of beauty, greenery and relaxation, a place to 'get away from it all'. While these words from the public conjure moments of peace and tranquillity, the Gardens also provide a place of gathering and socialising, making it a space to enjoy with loved ones or alone. The peaceful character of the Albury Botanic Gardens is also a home for birds, insects and other animals.

ALBURY BOTANIC GARDENS DRAFT MASTER PLAN GUIDING PRINCIPALS

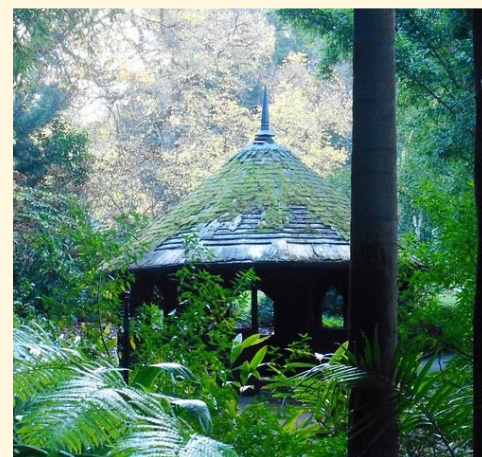


RESPONSE

- Replace end-of-life Elms with climate suitable Ginkgoes
- Establish a perennial border to provide colour and interest
- Screen Bungambrawatha Creek with planting
- Replace the inaugural Elm with another feature tree
- Build an accessible Rest House at the western end

REASON

- Elms are in poor condition and need replacement. They are struggling in this climate and are at the end of their life
- Area is iconic and well-loved. The heritage value needs to be protected through replacement planting and retaining the avenue character
- Perennials provide colour and interest to keep this area beautiful while new trees grow
- An accessible all-weather picnic shelter is needed
- Provides planting for pollinators and strengthens the Gardens role as a botanic garden



ALBURY BOTANIC GARDENS DRAFT MASTER PLAN THE AVENUE

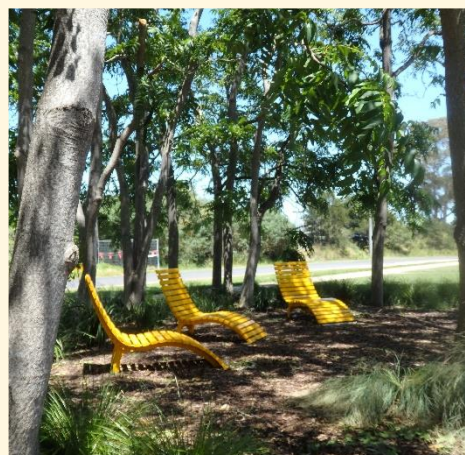


RESPONSE

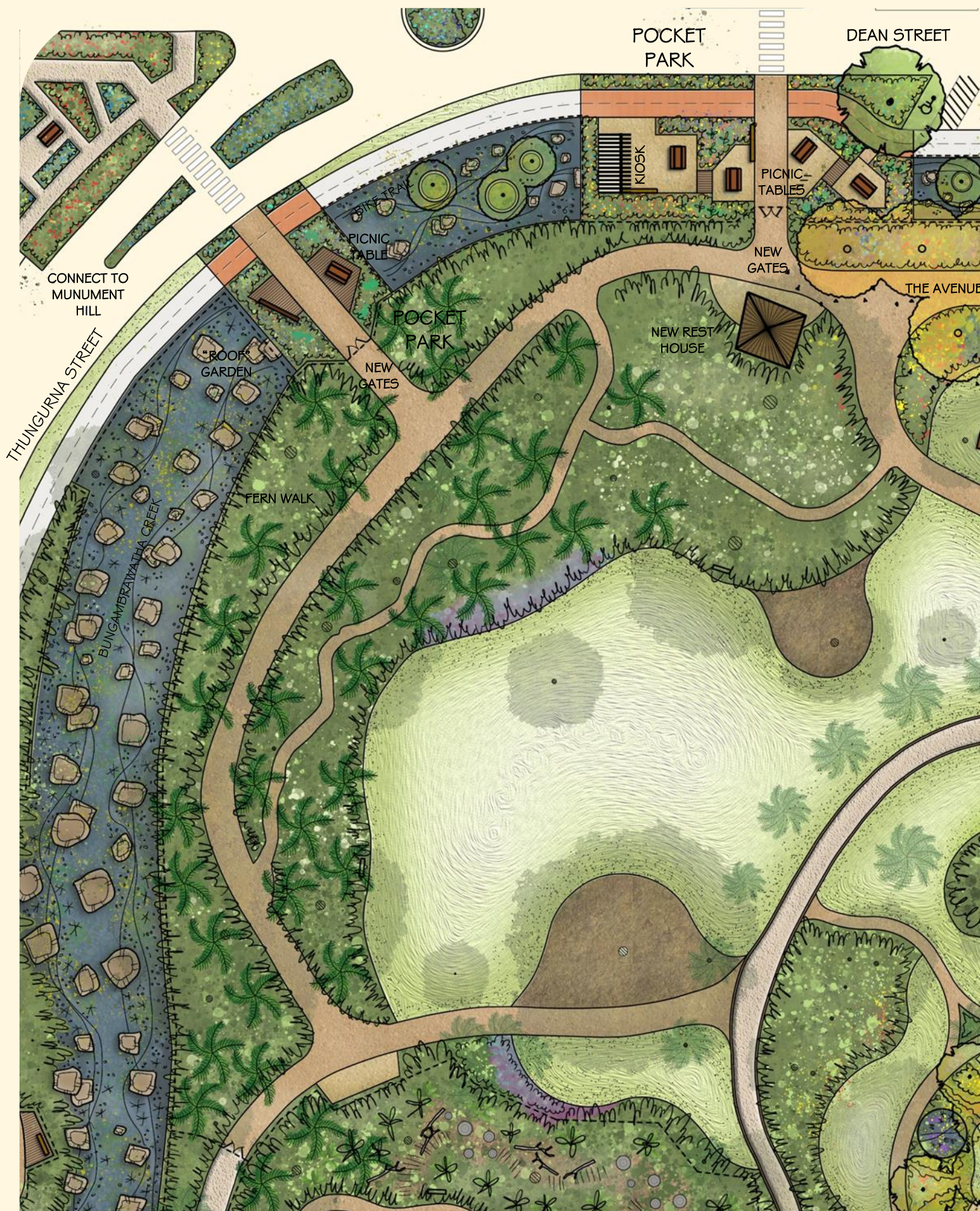
- Upgrade the ponds area with a collection of plants showcasing the flora of the Murray River
- Include a gathering lawn and places to sit
- Reinstall the heritage path
- Retain ponds as ephemeral water features
- High quality planting design, celebrating indigenous plants
- Provide a relaxed gathering space in the heart of the Gardens

REASON

- Area needs upgrading as ponds leak, water is wasted and drainage is poor. Ponds lack scale and rill dates from 1970s and sits poorly in the heritage landscape
- There was an overwhelming public desire for more native and indigenous plants
- Is an opportunity to work with and acknowledge the Traditional Custodians
- Strengthens the Gardens botanic and conservation work



ALBURY BOTANIC GARDENS DRAFT MASTER PLAN MURRAY RIVER COLLECTION (PONDS)

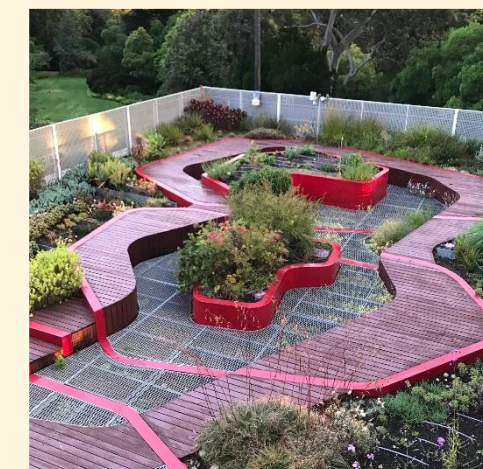
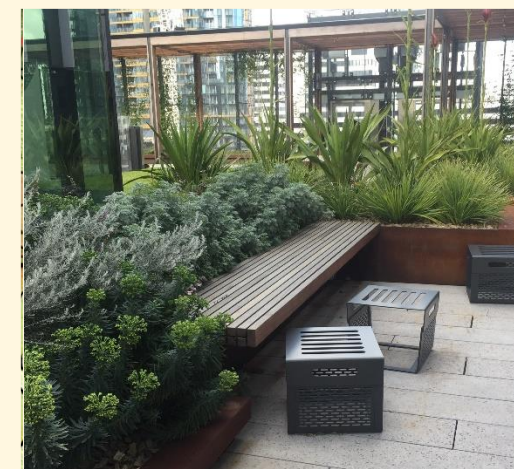


RESPONSE

- Three new pocket parks over Bungambrawatha Creek
- Create high quality entrances to the Gardens from Monument Hill and Dean Street
- Provide accessible picnic areas and kiosk
- Connect the Gardens to the CBD and Murray via the Bungambrawatha Creek Bike Trail
- Explore naturalising Bungambrawatha Creek

REASON

- Provides accessible picnic tables where they will not impact the heritage qualities of the main Garden
- Makes the Botanic Gardens more accessible with new entrances and bike trail connections
- Reduces the visual and environmental impact of Bungambrawatha Creek
- Works with wider AlburyCity Plans including the Murray River Experience
- Strengthens the Gardens role as a botanic garden



ALBURY BOTANIC GARDENS DRAFT MASTER PLAN BUNGAMBRAWATHA CREEK AND POCKET PARKS



RESPONSE

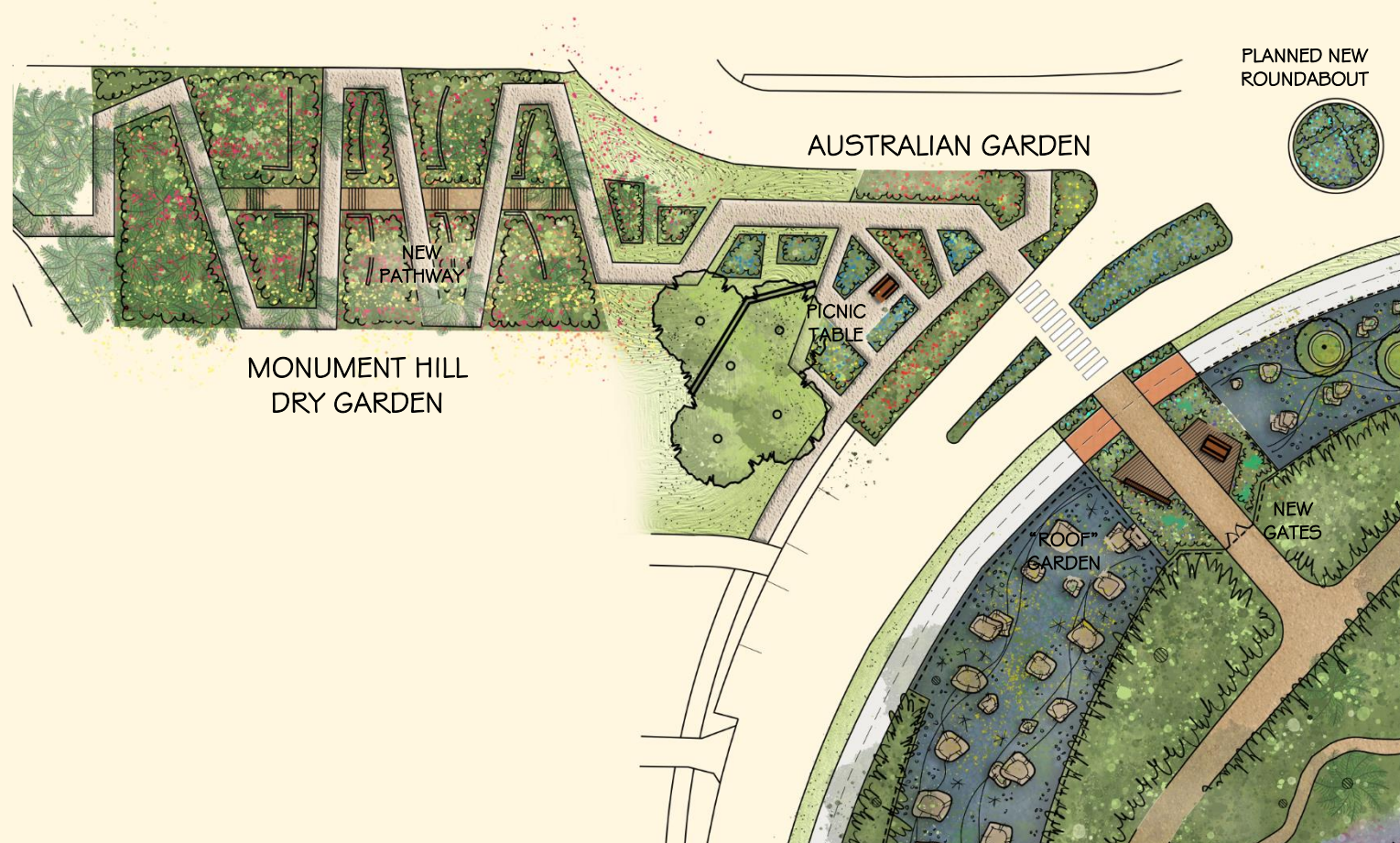
- Improve Rotunda entrance and create new one
- Reinstall "bandstand" use with a new performance lawn
- Create a Sensory Garden around the Rotunda
- Continue the Rose Garden upgrade works with new seats, climbing structures and flower beds
- New Lilypond in Rose Garden
- Provide more enclosure and picturesque style garden beds
- Reshape paths and open entrance on corner

REASON

- Access to the Rotunda is poor
- Reduces wear and tear on performance lawn by creating another useable space
- Garden beds lack structure and are not sympathetic to the picturesque / gardenesque design of the Gardens
- Rose Garden infrastructure needs upgrading
- Community requests for a water feature
- Allows historic entrance to be reopened once Bunya Pine (currently at end of life) is removed



ALBURY BOTANIC GARDENS DRAFT MASTER PLAN ROTUNDA AND ROSE GARDEN

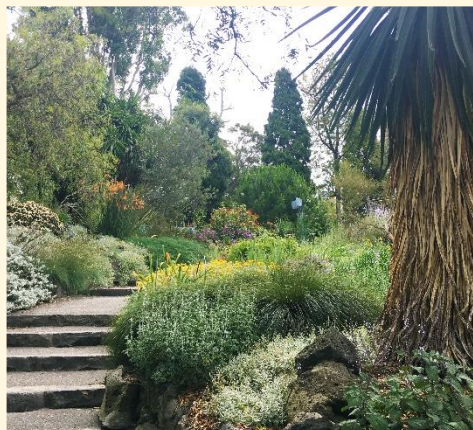


RESPONSE

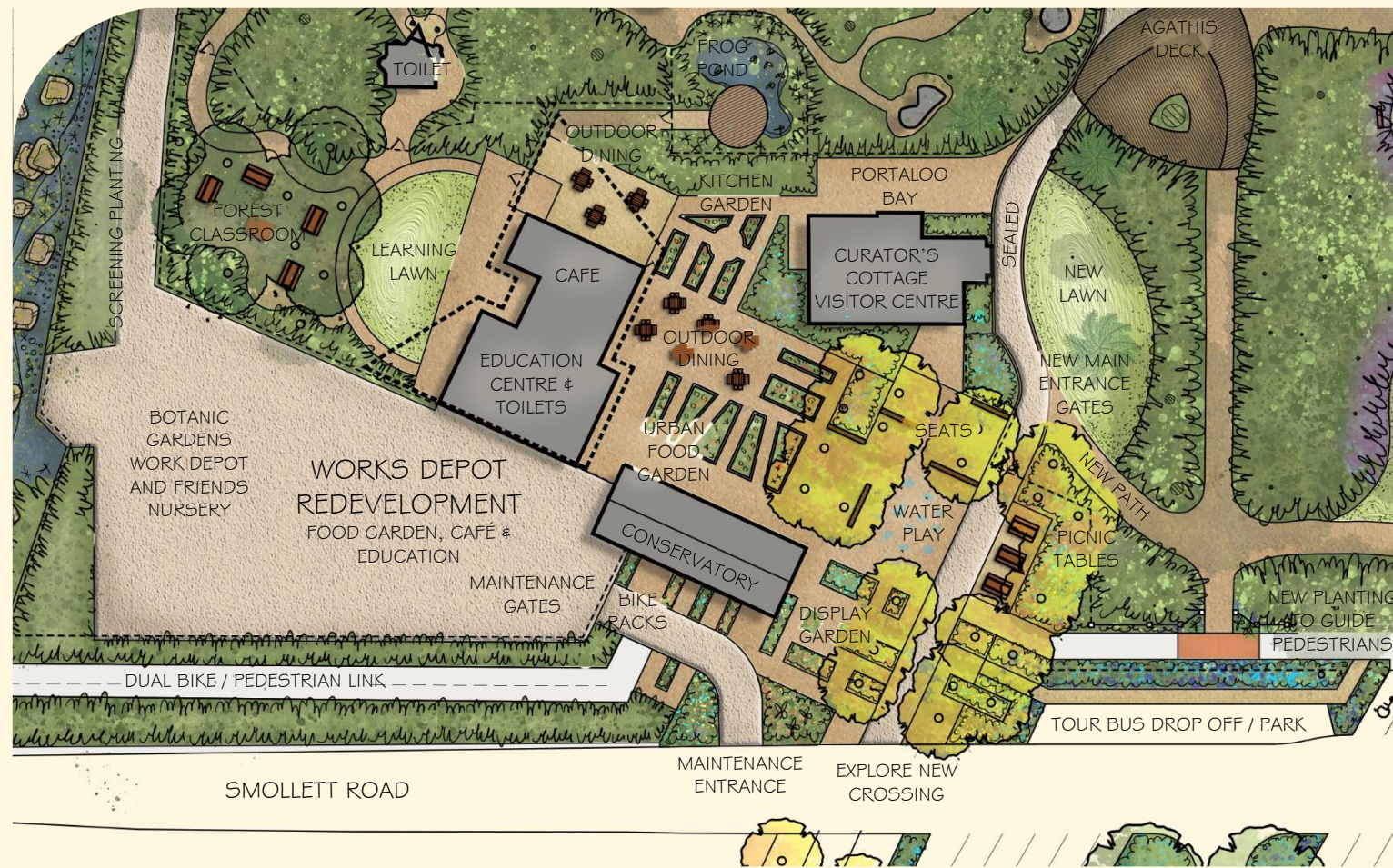
- Return the Monument Hill Annex to the Botanic Gardens
- Create a garden showcasing heat and drought tolerant plants
- Create an Australian Garden at the base of the hill
- Explore options for an accessible pathway
- Improve connections between Monument Hill, the Botanic Gardens and CBD

REASON

- Connects Albury CBD to Monument Hill
- Opportunity for collections outside the Gardens, especially drought tolerant and native plants
- Beautiful but underutilised space and iconic Albury view (used to be part of Gardens)
- Makes path to Monument Hill more accessible



ALBURY BOTANIC GARDENS DRAFT MASTER PLAN MONUMENT HILL DRY GARDEN

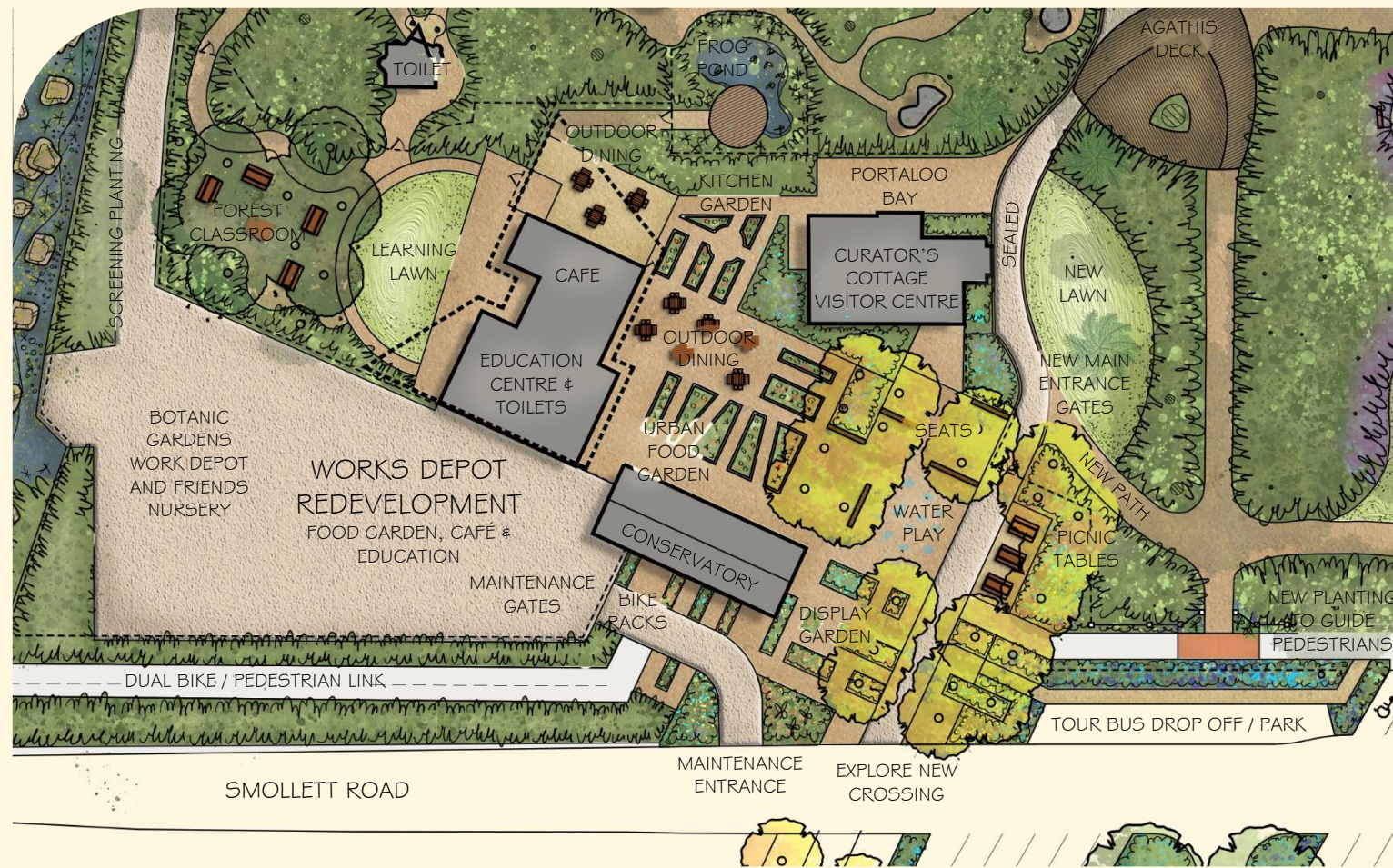


RESPONSE

- Return space to Garden use when super depot created
- Create a new community and education hub
- Dedicated Education Centre and Learning Lawn connected to Children's Garden
- Café
- Visitor Centre in former Curator's Cottage
- Conservatory / All weather glass house
- Urban Food Garden
- Plaza connection to Murray River Experience access
- New major entrance
- Picnic facilities and water play
- Improve maintenance access
- Retains small Botanic Gardens Works Depot



ALBURY BOTANIC GARDENS DRAFT MASTER PLAN COMMUNITY HUB



REASON

- Albury Botanic Gardens are beloved by the local Community and there was a great desire from the Community and Stakeholders for features that could not be accommodated within the historic core
- Supports long term AlburyCity plans (super depot, Murray River Experience)
- Provides all weather facilities
- Allows the Gardens to expand their educational role
- Provides visitor facilities requested by the Community
- Supports the Murray River Experience and Connections from the CBD, through and past the Gardens to the Murray River
- Creates a major new tourist attraction in Albury



ALBURY BOTANIC GARDENS DRAFT MASTER PLAN COMMUNITY HUB



MANAGEMENT CONSIDERATIONS

- Working with Traditional Custodians
- Long term tree care and replacement
- Living Collections and work as a Botanic Garden
- Protecting the heritage character
- Landscape Succession / responding to climate change
- Sustainable event management
- Entrance plantings and street presentation
- Planting design
- Annual and perennial planting
- Irrigation and water management
- Education opportunities
- Conservation work
- Parking and public transport
- Pedestrian safety and access
- Access for All
- Management as a heritage place
- Toilets and infrastructure
- Supporting the Friends

ALBURY BOTANIC GARDENS DRAFT MASTER PLAN MANAGEMENT, QUESTIONS AND COMMENTS