

Public Exhibition

AlburyCity

Operational Plan
2023-2024

Presented to Council 24 April 2023

DRAFT



AlburyCity

Table of Contents

Introduction	4	A Caring Community	20
Message from our Mayor and CEO	4	3.1 Albury's local Aboriginal and Torres Strait Islander community is empowered through self-determination.	20
Integrated Planning and Reporting	5	3.2 Albury is a welcoming, caring and healthy community with an emphasis on physical, mental and spiritual wellbeing.	21
A Growing Sustainable Economy	7	3.3 Our community values arts, culture, heritage and place. All residents share and celebrate our multiculturalism in a welcoming and open community.	22
1.1 Albury is a liveable city supporting sustainable population growth through the provision of high-quality infrastructure, industry-leading services and high levels of amenity.	7	3.4 Albury is a destination for young people that collaborates with them to increase education and is youth centric.	23
1.2 Albury has an accessible, integrated transport network that connects our city through safe and efficient travel options.	9	3.5 Albury is a safe, inclusive and accessible region for our entire community.	23
1.3 Albury will offer diverse and innovative tourism experiences to attract new and repeat visitation.	10	3.6 Albury is a vibrant region that values the enrichment offered by arts and cultural activities and provides for diverse lifestyles and experiences.	25
1.4 Albury has a national reputation as a place to do business, supported by a resilient, future-focused and sustainable economy driving employment and supporting growth across all sectors.	11	A Leading Community	27
1.5 Albury has a secure, integrated water and natural asset supply to support a circular economy.	12	4.1 Albury has strong partnerships so that the community's aspirations can be delivered through an integrated planning approach.	27
An Enhanced Natural Environment	13	4.2 Albury collaborates as a community to plan for the future and work towards a shared vision.	28
2.1 Albury is a zero emission and climate resilient city.	13	4.3 Albury is nationally recognised as a vibrant, innovative, collaborative cross-border community.	22
2.2 Albury embraces the cultural heritage of Aboriginal and Torres Strait Islander people.	14	4.4 Albury continues to have strong community leadership from a diverse range of backgrounds, driven by good governance.	29
2.3 Albury is a leader in resource management and circular economy.	15		
2.4 Albury is a recognised leader in the protection, conservation and management of our natural assets.	18		

Acknowledgement of Country

AlburyCity acknowledges the Wiradjuri people as the traditional custodians of the land in which we live and work and we pay our respects to Elders past, present and future for they hold the memories, culture, tradition and hopes of the Aboriginal and Torres Strait Islander people that contribute to our community.



Artist Teisha Maksymow – McGuinness

This artwork represents our paths intertwining and moving forward as 'one' community in Albury. *Mudyigong Ganhiimali* is the name of the artwork meaning 'Elder leading'. This artwork is named this because in order to move forward as 'one' whole community, we must seek the knowledge and guidance from our Elders to lead us all in the same direction of togetherness, unity and reconciliation. The mountains not only depict the mountains surrounding the Albury area, but they also are a representation of our local Elders, who push us all together as a united community. In the centre of this artwork, you will see a gathering of community members. The kangaroo tracks represent the notion of only successfully moving forward in life as one whole community (kangaroos cannot jump backwards).

Introduction

Message from the Mayor and CEO

It is our pleasure to share with the community our Operational Plan for 2023-2024.

Our Operational Plan reinforces our commitment to continuous improvement, with a clear focus on financial sustainability and delivering value for money in everything we do.

We will continue to deliver a diverse range of services, from roads and footpaths, parks and gardens, community services and events, stormwater and sewerage networks and everything in between.

Our Operational Plan contains more than two hundred specific actions we will undertake over the 2023-2024 financial year, with a clear focus on the strategic priorities for Albury as determined by our community in the *Towards Albury 2050* Community Strategic Plan: A Growing Sustainable Economy; an Enhanced Natural Environment; a Caring Community and a Leading Community.

With a focus as a can-do and collaborative organisation we will continue to innovate and be dynamic and ensure our community comes first through serving with excellence, empowering progress and taking care of our place.

The internally focused *AlburyCity Our Future Strategy* and business improvement focus encourages Our People to live and breathe our values and vision to enable us to deliver this year's plan and will ensure AlburyCity remains vibrant, rewarding and community focused.



We will continue to identify efficiencies and savings, optimise grant funding opportunities, plan for the renewal of community assets and be at the forefront of listening to our community every step of the way.

Thank you to our community, Councillors and AlburyCity team for working in partnership to deliver value for money across the broad range of activities highlighted in the 2023-2024 Operational Plan.

Kylie King
AlburyCity Mayor

Frank Zaknich
Chief Executive Officer

Integrated Planning and Reporting

Integrated planning and reporting outlines the system of integrated business planning for local government in NSW.

The aim of the framework is to ensure that Councils:

- **Integrate** community priorities into council strategies and plans
- **Support** community and stakeholders to play an active role in shaping the future of the community
- **Articulate** the community's vision and priorities
- **Maintain** accountability and transparency by regular monitoring and reporting.

Key Components of Integrated Planning and Reporting

Community Strategic Plan (CSP)

A council's Community Strategic Plan is the highest-level plan a council will prepare. The CSP is the cornerstone document of the New South Wales Government's Integrated Planning and Reporting Framework (IP&R). It identifies the community's most important priorities.



Resourcing Strategy

The Resourcing Strategy outlines the resources required to implement the strategies in the CSP and the principal activities in the Delivery Program. The Resourcing Strategy includes the Long-Term Financial Plan, Our People Strategy and Asset Management Strategy and Plans.



Delivery Program

The council's commitment to the community about what it will deliver during its term in office to achieve the Community Strategic Plan objectives.



State of our City Report

Prepared by each outgoing council and noted by the incoming council and reports to the community on effectiveness of implementation of the CSP.



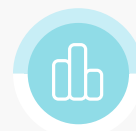
Operational Plan

It shows the individual projects and activities a council will undertake in a specific year.



Measuring Progress

The IP&R framework requires councils to measure and report on progress in implementing this Plan using a set of community indicators.



Annual Report

It reports back to the community on the work undertaken by council each year to deliver on the commitments of the Delivery Program and Operational Plan.

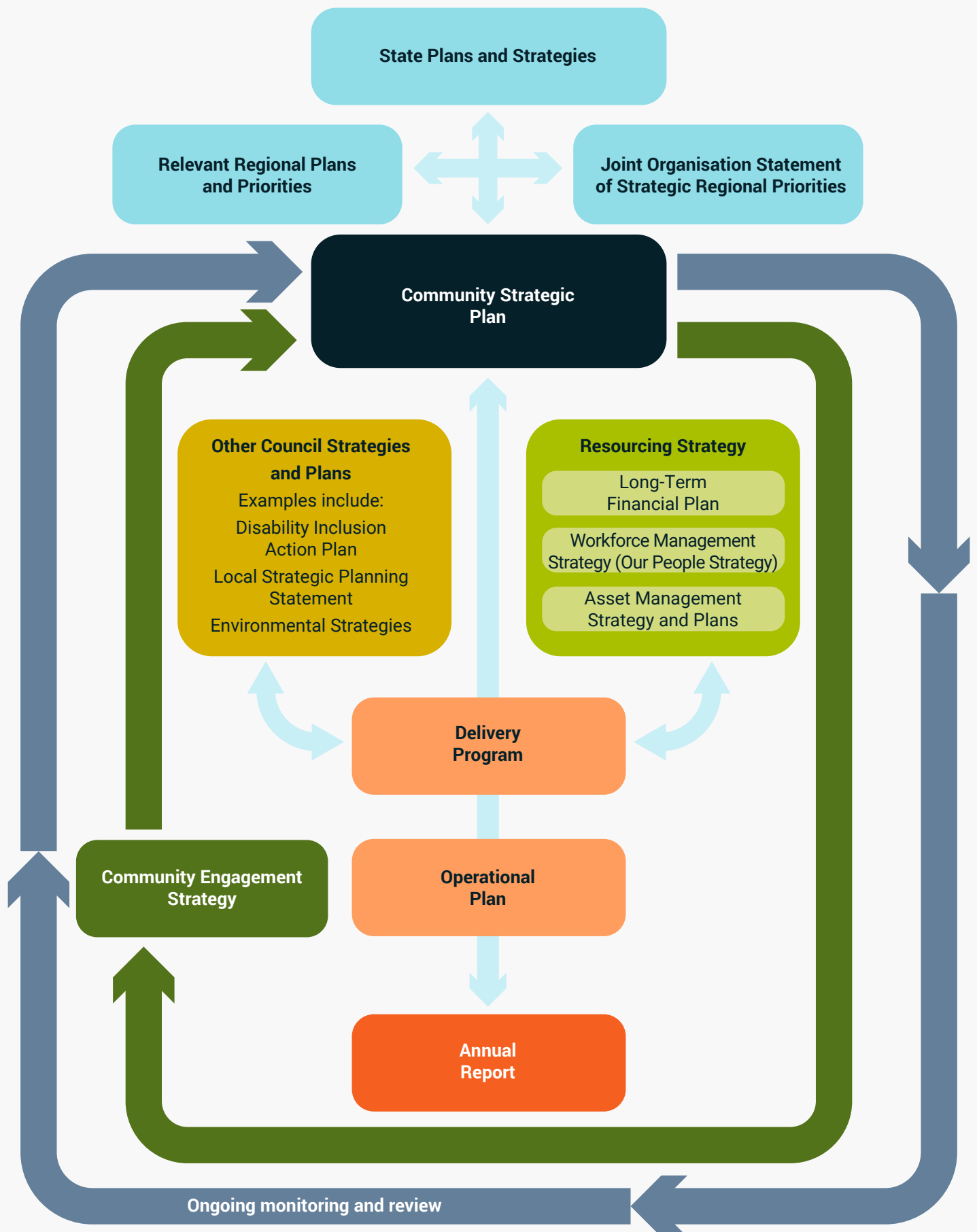


Reporting Progress

- Delivery Program – 6-monthly progress reports
- Annual Report
- State of our City Report – in line with election cycle, generally every four years



The Integrated Planning and Reporting Framework





A Growing Sustainable Economy



1.1 Albury is a liveable city supporting sustainable population growth through the provision of high-quality infrastructure, industry leading services and high levels of amenity.

4 Year Delivery Program Principal Activities

Plan and implement provision of critical infrastructure and land supply to support balanced growth.

Enhance the amenity in our city's growth corridor.

Balance the growth of our city with enhancement of our natural environment.

Projects 2023-24

- Albury Water Reticulation - Annual Meter Replacement Program
- Annual Sewer Rehabilitation Program
- Cultural Precinct Implementation Feasibility Study
- Drainage - Dean Street/Macauley Street/David Street
- Drainage - Lavington Drain East Branch (Boronia Street to Railway Line)
- Drainage - Reconstruction Holmwood Cross Drain (Elm Street to Albury TAFE)
- Drainage - Reconstruction Lavington Drain East Street Branch (McMaster Street to Webb Street)

- Drainage - Lavington Drain East Street Branch - Wagga Road to Griffith Road
- Glenmorus Gardens Development Section 15
- Interim Capacity Upgrades of Waterview and Kremur Street Wastewater Treatment Plants
- Kremur Street Wastewater Treatment Plant - Data Capture Improvements
- Main Sewage Pump Station and New Rising Main (Wodonga Place Depot)
- Sewage Pump Station (SPS) Number 37 - Jelbart Road - Upgrade
- Sewer Projects - Equipment replacements
- Strategic Land Purchase (Circular Economy)
- Thurgoona Landscaping Management Plan
- Thurgoona North Sewerage Infrastructure - Kerr Road Connection
- Thurgoona Wirlinga Sewer Upgrades and Growth Support
- Upgrade of AlburyCity Water Treatment Plant
- Water Infrastructure Supervisory Control and Data Acquisition (SCADA) System - Telemetry and Instrumentation
- Waterview - Stage Two Wastewater Treatment Plant

Operating Projects and Programs

- Albury and Lavington CBD Master Plan reviews
- Cultural Precinct Masterplan Implementation Feasibility Study
- Depot - Relocation Feasibility Study
- Implement the Economic Development Incentive Program
- Infrastructure Contributions Plan Review
- Thurgoona Wirlinga Precinct Structure Plan Review



1.2 Albury has an accessible, integrated transport network that connects our city through safe and efficient travel options.

4 Year Delivery Program Principal Activities

AlburyCity will develop and implement a capital works plan that prioritises works and resources to address community concerns and improve safety, amenity and efficiency of our transport network.

We will investigate the implementation of vehicle charging infrastructure for the future uptake of electric vehicles.

We will be involved in and contribute to review programs and maintain advocacy to government identified recommendations.

AlburyCity will deliver increased access to active and sustainable travel options across our city through improved infrastructure to increase walking and riding, and programs that support active travel.

AlburyCity will collaborate to ensuring all modes within our transport system are coordinated and connected efficiently and reliably to each other across the border.

Work effectively with current and future land use and development by partnering with and advocating to City of Wodonga and State Governments on all transport related projects.

We will continue to advocate for improvements to the Albury-Wodonga Bus Network.

Partner with Local and State Government (Transport for NSW).

Projects 2023-24

- Australia Park Car Park and Linking Footbridge
- Borella Road Retaining Wall
- Drainage - Retarding Basin Rehabilitation (Rear 24 Lexington Place)
- Footpath - Borella Road and Riverina Highway Strategy
- Footpath/Bikepath - Accessibility Improvements to meet Disability Discrimination Act (DDA) requirements
- Footpath/Bikepath - Albury CBD Bike Loop
- Footpath/Bikepath - Asset Renewal Program
- Footpath/Bikepath - Construction Program
- Footpath/Bikepath - Cycleways and Active Transport Program
- Lighting - Kerr Road
- Lighting - Bulk Lamp Replacement
- Road - Butt Street (Jamieson to Percy)
- Road - Dean Street/Garden Street/Thurgoona Street Intersection
- Road - Doctors Point Road (Flood Resilience)
- Road - Kiewa Street (Hume to Smollett)
- Road - Mudge Street (Centaur to Tip Road)
- Road - Road and Drain Rehabilitation
- Road - Splitters Creek Road Construction
- Road - Thurgoona Drive/Shuter Avenue Intersection
- Road - Thurgoona Link Roads
- Road - Hawkesview
- Road - Perryman Lane
- Road - Thurgoona Drive and Evesham Place Intersection

Operating Projects and Programs

- Implement Car Parking Strategy initiatives
- Implement the Albury Wodonga Integrated Transport Strategy (MOVE)
- Review and implement the Pedestrian Access and Mobility Plan projects
- Review and implement Albury Bicycle Plan priorities

1.3 Albury will offer diverse and innovative tourism experiences to attract new and repeat visitation.

4 Year Delivery Program Principal Activities

Improving the quality of tourism experiences through tourism infrastructure renewal and development, placemaking activities and events.

Review the Albury Wodonga Destination Management Plan.

Develop and implement ongoing integrated marketing campaigns aligned to audiences and experiences in identified out of region areas.

Continued support and advocacy of tourism operators through a Tourism Partner Program.

Strengthen relationships with State and Federal tourism bodies to fund and support large scale events.

Projects 2023-24

- Albury Airport - Extension of Taxiway C Stage 2 (Turning Node)
- Albury Airport - General Aviation Development (Western Precinct)
- Albury Airport - Northern Apron Resurfacing (Construction)
- Albury Airport - Reshape and Strengthen Taxiway Bravo
- Albury Wodonga Tourism Signage Strategy Implementation
- Visitor Services and Engagement Review - Implementation and Activation
- Wonga Wetlands Machinery Shed

Operating Projects and Programs

- Albury Aviation and Marketing Strategy Renewal
- Albury Wodonga Four Seasons Promotional Campaign
- Implement the AlburyCity Events Strategy
- Prepare annual Visitor Economy Trend analysis
- Visit Albury Wodonga Destination Marketing Activation Program



1.4 Albury has a national reputation as a place to do business, supported by a resilient, future-focused and sustainable economy driving employment and supporting growth across all sectors.

4 Year Delivery Program Principal Activities

Undertake policy and regulatory reform to facilitate the transition to a circular economy.

Actively seek to attract new and transition existing business and industry to circular economy operating models.

Champion and disseminate circular economy information and advancements to our local community.

Further diversify the industry mix with a focus on disruptive industries and green technology.

Continue to work with all levels of Government to leverage the opportunities provided by the Regional Jobs Precinct.

Identify opportunities associated with major projects including Inland Rail.

Support local business resilience and recovery efforts.

Support organisations working with innovative industries to unlock new employment opportunities.

Review and implement the Economic Development Strategy.

Take a leading role in advocating for future investment with a focus on innovation, advanced manufacturing, transport and logistics, knowledge-sector employment and service industries.

Work with Albury Business Connect to provide networks and support for start-ups.

Support businesses to build improved technology capability.

Support the establishment of improved digital infrastructure to ensure connectivity is adequate to support community and business needs.

Operating Projects and Programs

- Development of a Fleet Management Strategy and Plan
- Implement the Economic Development Marketing Strategy
- Implement the University of NSW Rural Clinical School Medical Scholarship Program
- Review and Implement the Economic Development Strategy
- Implement the Albury Retail Action Plan 2023-2027



1.5 Albury has a secure, integrated water and natural asset supply to support a circular economy.

4 Year Delivery Program Principal Activities

Utilise water saving devices and practices across our parks, reserves and facilities.

Our water quality continues to improve, reducing unplanned water supply interruptions.

Projects 2023-24

- Annual Water Main Replacement/Renewal Program
- Backflow Prevention Compliance Program
- Development of Water and Wastewater Hydraulic Modelling and Infrastructure Master Plans
- Electrical upgrades - Wastewater Network
- Electrical upgrades - Water Network
- Water Infrastructure for Thurgoona Wirlinga Growth Precinct
- Water Reservoirs Upgrade Program
- Water Supply Energy Efficiency Strategy Implementation
- Water Supply Projects - Equipment Replacement
- Water Trunk Main from Albury Water Filtration Plant to Riverina Highway/Kerr Road intersection

Operating Projects and Programs

- Implement the Thurgoona Wirlinga Drainage Strategy
- Onsite Sewer Management Framework and Implementation
- Upgrades to Water Reservoir
- Water Filtration Plant Masterplan
- Water Mains Cleaning Program



Image Copyright Visit AlburyWodonga



An Enhanced Natural Environment



Our natural environment is protected and enhanced, we have adapted to the changing climate and continue to lead in emissions reduction and in natural resource and waste management.

2.1 Albury is a zero emission and climate resilient city.

4 Year Delivery Program Principal Activities

We have improved environmental performance of new and existing buildings and have advocated for renewable energy production and cleaner fuels.

Develop and implement a Climate Action Plan that sets out how our community and Council will achieve its carbon emission reduction targets.

We engage with our community to build awareness around climate change and carbon mitigation.

Implement actions within AlburyCity's Climate Adaptation Plan relating to the climate change projections for temperature, hot days, rainfall and fire weather.

We will work as capacity builders for our community to adapt to the changing climate.

Projects 2023-24

- Albury Waste Management Centre - Power Supply Upgrades
- Electric Vehicle Charging Infrastructure
- Energy Efficiency Projects
- Develop and implement the Urban Forest Strategy

- Energy Savings - Solar Shade on Multi-Storey Car Parks
- Flood - South Albury Levee - Australia Park
- Flood - Thurgoona Wirringa Drainage Strategy
- Flood Prevention Measures

Operating Projects and Programs

- Albury Wodonga Regional Natural Environment Strategy Action Plan
- Bungambrawatha Creek Naturalisation Feasibility Assessment
- Develop and implement a Climate Action Plan

- Environment and Sustainability Community Awareness Program
- Implement AlburyCity's Climate Change Adaptation Strategy
- Implement Albury Fire Management Plan actions
- Implement the Sustainability Framework and Action Plan
- Implement the Zero Emissions Fleet Transition Plan
- Sustainability Rebate Program
- Water Conservation and Drought Awareness Program

2.2 Albury embraces the cultural heritage of Aboriginal and Torres Strait Islander people.

4 Year Delivery Program Principal Activities

Increase visitor and community awareness of local culture and history of the Aboriginal and Torres Strait Islander people.

Projects 2023-24

- Mungabareena Aboriginal Place Management Plan Implementation
- Wagirra Trail - Ongoing Construction and Design



2.3 Albury is a leader in resource management and circular economy.

4 Year Delivery Program Principal Activities

We will increase the proportion of renewable electricity consumed by AlburyCity through our electricity procurement, while also facilitating community uptake of renewable energy use.

We will expand and support circular economy and resource recovery industry in the Albury Wodonga region.

We will utilise water saving devices and practices across our parks, reserves and facilities, delivering with innovative management practices.

Seek partnerships with all levels of government and other key stakeholders, including universities and other research institutions, to progress new innovations in resource recovery and to maximise the regional circular economy.

Projects 2023-24

- Albury Waste Management Centre - Implement In-Vessel Composting
- Albury Waste Management Centre - Concrete Crushing Unit
- Albury Waste Management Centre - Leachate Upgrades Northern Valley - Construction
- Albury Waste Management Centre - Material Recovery Facility for Construction and Demolition Material
- Albury Waste Management Centre - Northern Valley Cell 3 Construction
- Albury Waste Management Centre - Southern Valley Cell Extension Construction
- Fleet Replacement Program

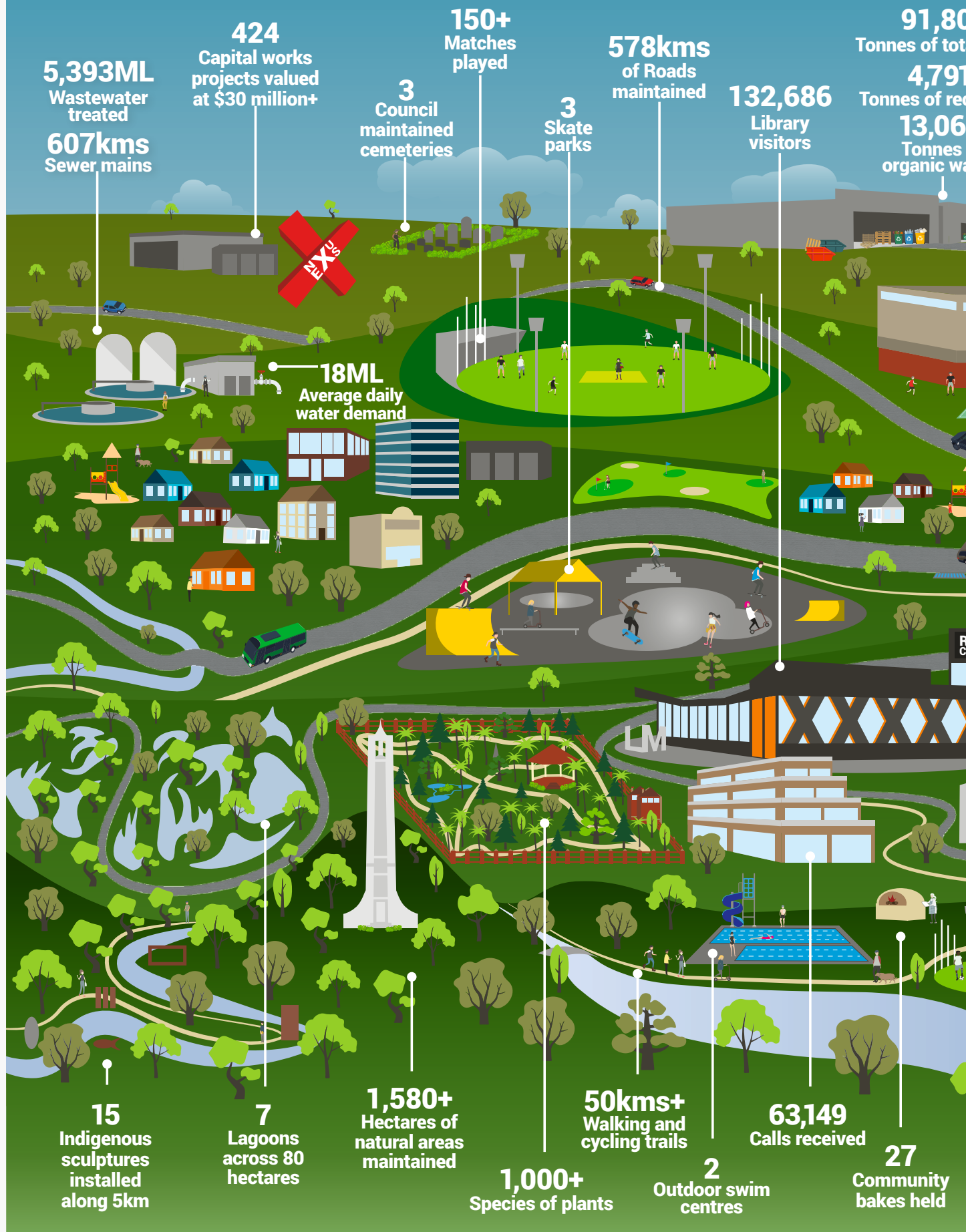
Operating Projects and Programs

- Albury Wodonga Sustainable Living Festival - Annual Contribution
- Implement the Environmental Approvals Procedure
- Implement the Waste Management Strategy
- Recycled Water Management Plan
- Sustainability - Community Energy Fund
- Thurgoona Wirlinga Drainage Strategy

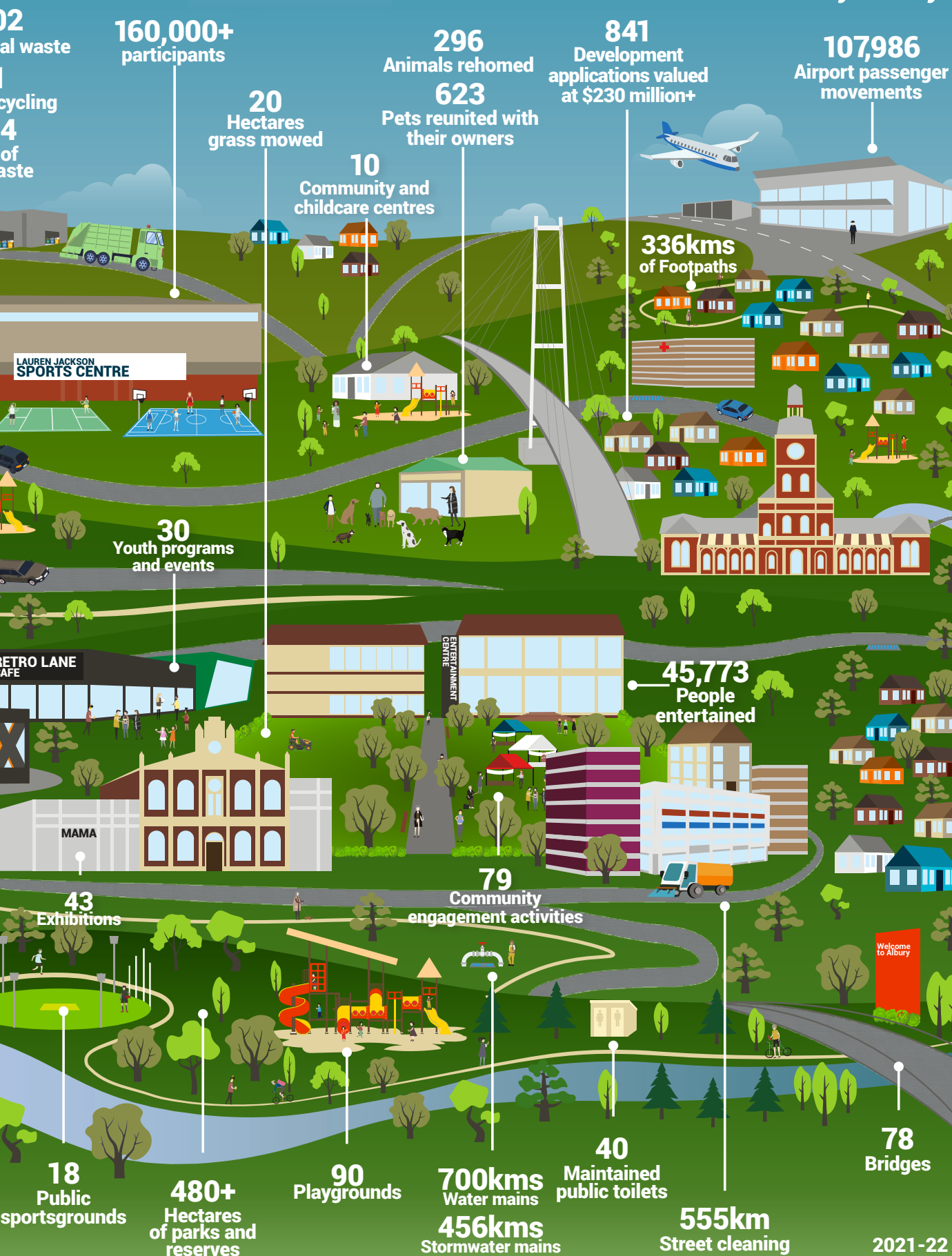


Image Copyright Visit AlburyWodonga

Our Council



AlburyCity



2.4 Albury is a recognised leader in the protection, conservation and management of our natural assets.

4 Year Delivery Program Principal Activities

Our natural assets are protected and enhanced through the development of policy and measurable assigned value.

We will develop sustainable design guidelines for the use on renovations and constructions to balance the growth of our city and sustainability of our natural environment.

Protect and enhance Environmental Lands managed by Council.

Improved ecosystem connectivity and threatened species habitat.

We continue to collaborate with technical experts to monitor and inform management for key threatened and locally significant species, including Squirrel Glider; Sloane's Froglet; Brush-tailed Phascogale; and Woodland bird communities.

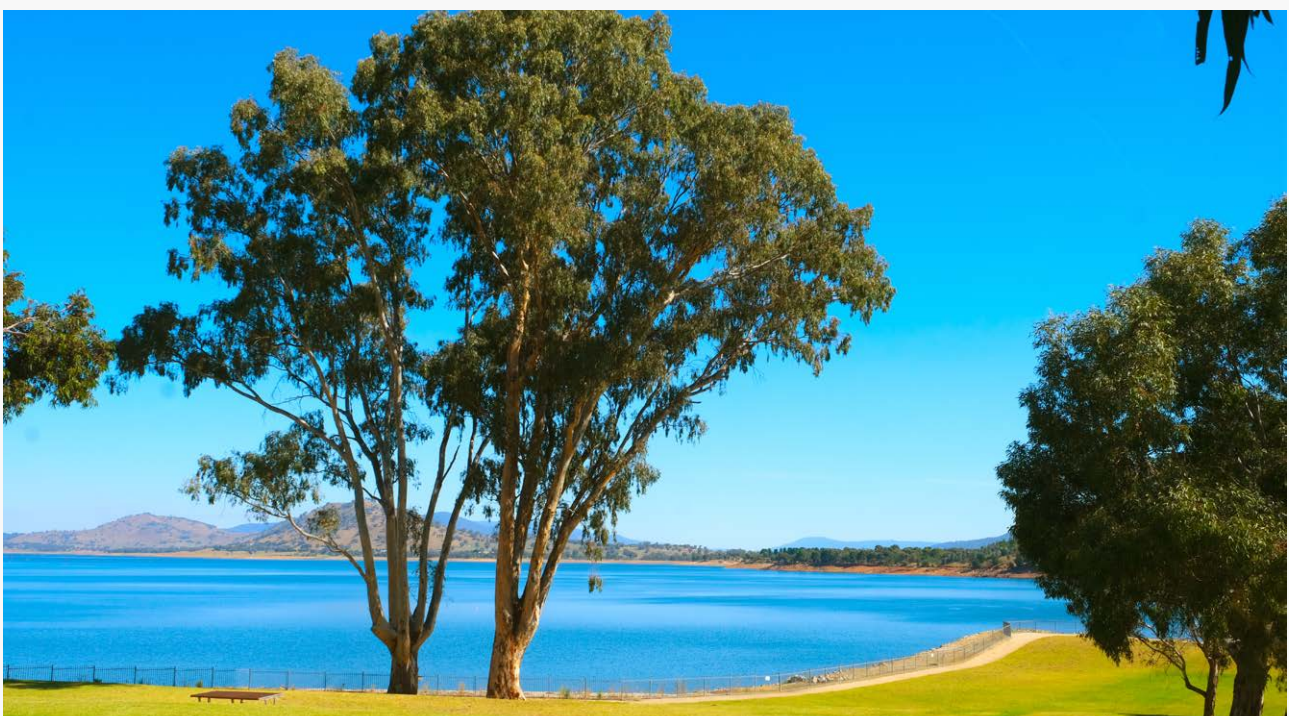
Implementation of the annual Community Awareness Program to enhance the community's opportunities to enjoy our natural environment.

Projects 2023-24

- Botanic Gardens - Elm Avenue Redevelopment
- Hume Weir Park Improvements
- Murray River Experience - Oddies Creek Park and Noreuil Park Streambank Weed Removal, Remediation and Revegetation Works
- Murray River Experience - Wonga Wetlands Visitor Education and Experience Centre
- Strategic Land Acquisition - Open Space - Thurgoona Wirringa Structure Plan

Operating Projects and Programs

- Albury Environmental Lands - Strategies, Management and Use
- AlburyCity Land Management Incentive Program
- Annual Tree Management Program
- Biodiversity Certification - Biodiversity Offsets Scheme surveys
- Provide ongoing funding for the Environmental Land Maintenance fund to protect bushland areas connection between corridors







A Caring Community

We are a diverse, welcoming community that has an emphasis on physical, mental and spiritual wellbeing. Our community is a safe place, where everyone has access to quality facilities, activities and human services. We take pride in celebrating our heritage and multiculturalism within our community.



3.1 Albury's local Aboriginal and Torres Strait Islander community is empowered through self-determination.

4 Year Delivery Program Principal Activities

4 Year Delivery Program Principal Activities

AlburyCity will collaborate with State Government and City of Wodonga to create culturally appropriate services to improve health, education and employment goals of the local Aboriginal and Torres Strait Islander people.

Strengthen our capacity for collaboration and effective partnerships to deliver community and social well-being projects.

Operating Projects and Programs

- Conduct community development programs for Aboriginal and Torres Strait Islander People
- Ensure Aboriginal Culture is valued, collected, interpreted and promoted in all that we do
- Implement the Reconciliation Action Plan
- Ongoing review and implementation of our Aboriginal and Torres Strait Islander Protocols
- Review and develop the Aboriginal Employment Strategy
- Work with our Aboriginal and Torres Strait Islander communities and other agencies to improve outcomes for Aboriginal and Torres Strait Islander people

3.2 Albury is a welcoming, caring and healthy community with an emphasis on physical, mental and spiritual wellbeing.

4 Year Delivery Program Principal Activities

Address workforce participation barriers.

Strengthen Albury's role as regional hub for business, education, health, tourism and creative pursuits.

Improve learning and job outcomes for young people through improved school age career interventions.

AlburyCity will advocate to improve the capacity of services to better respond to people with mental health needs.

We continue to collaborate with and advocate to Australian and State Government to further enhance health services to improve the health of our community.

Projects 2023-24

- AlburyCity Community Fund

Operating Projects and Programs

- Collaborate and advocate to further enhance health services to improve the overall health of our community
- Continue service delivery for the Banjora Children's Centre
- Continue to offer the Out-of-School Hours Program
- Crossing Place Exhibition Refresh
- East Albury Precinct Master Plan
- Implement Multicultural Action Plan
- Review of the Prevention of Homelessness Strategy
- Social Infrastructure Strategy - Development
- Support other agencies in providing local career/ vocational days/expos
- Undertake additional education programs across AlburyCity Children's Services



3.3 Our community values arts, culture, heritage and place. All residents share and celebrate our multiculturalism in a welcoming and open community.

4 Year Delivery Program Principal Activities

AlburyCity provides a great diversity in communication offerings.

Increase participation in arts, cultural and heritage activities.

Promote and educate visitors on local history, landscape, businesses and cultural assets.

Activate the cultural precinct and create connections between stakeholder facilities.

Ensure provision of accessible high quality and innovative placemaking initiatives.

Encourage support and foster sustainable organisations to deliver cultural experiences.

Prepare and implement proactive safety strategies to improve community awareness and address anti-social behaviour.

Projects 2023-24

- Feasibility of Oddies Creek Park Play Space Stage 3 Splash Park
- Open Space Strategy
- Play Space Shade Program
- Sports Field Lighting and Power Upgrade - Urana Road Oval - Design and Installation
- Thurgoona Museum Collection Store Expansion - Refurbishment
- World War II Memorial Bowl Upgrade (Construction)

Operating Projects and Programs

- Implement the Inland Water Safety Strategy
- Implement the Multicultural Plan
- Plan and implement community development programs for people from diverse cultures
- Heritage Review



3.4 Albury is a destination for young people that collaborates with them to increase education and is youth centric.

4 Year Delivery Program Principal Activities

Create opportunities for young people to socialise and feel included in their community through low-cost or free creative and recreational programs.

Continue to consult with our young people to identify their needs and concerns through various channels and events.

Projects 2023-24

- Early Years and Young Peoples Strategy - Development
- Lauren Jackson Sports Centre - Major Upgrade (Stage 1)

Operating Projects and Programs

- Continue to provide mentoring and leadership opportunities for the AlburyCity Youth Council and youth management committees

3.5 Albury is a safe, inclusive and accessible region for our entire community.

4 Year Delivery Program Principal Activities

Deliver and partner with cultural heritage groups and other organisations to deliver culturally relevant activities.

In collaboration with local services, identify emerging social issues and deliver strategies that address issues and promote equity.

Deliver new and upgraded council-owned facilities and spaces with a focus on accessibility.

Deliver and partner with the community to shape the direction and management of the social, economic and environmental impacts of graffiti to enhance the amenity of the city.

Deliver and partner with community to implement Crime Prevention Through Environmental Design (CPTED) principles to address safety in our city.

Collaboration and investment to implement recommendations of the Albury Local Housing Strategy.

Projects 2023-24

- | | |
|---|--|
| <ul style="list-style-type: none"> • Albury Animal Care Centre redevelopment • Albury Regional Skate Park - Toilet Block • Building - Administration Building Main Switchboard Replacement • Building - Administration Building - Water Infiltration in Basement • Building - Administration Building Upgrade Program • Building - Alexandra Park - Murrayfield Amenities Building (Design Phase) | <ul style="list-style-type: none"> • Building - All Buildings Asbestos, Fire and Other Audits • Building - Bunton Park Refurbishment • Building - Canteen Upgrade Program |
|---|--|

Projects 2023-24 continued

- Building - Emergency Management Centre Stage Two (SVR)
- Building - Greenfield Park Amenities Building Design and Construction
- Building - Jelbart Park Master Plan - Design and Investigation
- Building - Melrose Park Sports Pavilion - Construction
- Building - Public Change Room Upgrade Program
- Building - Ross Circuit Pre-School - Roof Replacement and Drainage Upgrade
- Building - Westside Community Centre Redevelopment
- Building - Bunton Park Toilet Replacement
- Education Hub and Emergency Pens (Animal Care Centre)
- Fredericks Park Master Plan - Design and Stage 1 Construction
- Hovell Tree Park - Public Toilet Replacement
- Jelbart Park - Changing Rooms Shower Upgrade
- Lake Hume Public Toilet Replacement
- Lavington Swim Centre - Replacement of the Existing Facility with a New Facility
- Les O'Brien Athletics Precinct Complex Upgrades
- Murray River Experience - Apex Park (Lake Hume) - Boat Ramp Car Park Upgrade
- New Public Toilets at Glenmorus Crematorium
- Sarvaas Park Building Upgrade - Construction
- Wagirra Depot Building Works
- Westside Community Centre Project
- Wodonga Place Depot - Portable Buildings and Demolition

Operating Projects and Programs

- Contribute to the Local Government NSW Community Safety and Crime Prevention Network
- Convene and contribute to the Albury Crime Prevention Committee
- Develop the bi-annual CCTV report
- Implement the Graffiti Management Plan
- Implement the Disability Inclusion Action Plan (DIAP)
- Keep Track of Your Best Mate
- Maintaining the Public CCTV System
- Review and implement Road Safety Strategy
- Review of Crime Prevention Plan



3.6 Albury is a vibrant region that values the enrichment offered by arts and cultural activities and provides for diverse lifestyles and experiences.

4 Year Delivery Program Principal Activities

Activate public spaces through public arts, placemaking activities, festivals and programs and events that reflect the diversity of our community.

Ensure provision of accessible, high quality and innovative cultural facilities and services.

Recognise Aboriginal and Torres Strait Islander Peoples' continuing connection to culture.

Collaborate with local, regional and national cultural stakeholders to deliver high quality arts and cultural initiatives.

Tell our community's stories through arts and culture.

Increase the visibility of arts and culture across the community.

Prioritise development opportunities for Aboriginal and Torres Strait Islander creatives and organisations.

Support the development of local creatives and cultural organisations.

Provide education and engagement opportunities to build the skill base of our creatives and cultural organisations.

Support a creative economy that is locally sustainable and connected to the national creative economy.

Provide a broad program of Council-delivered civic and community events.

Develop and implement a Cultural Plan.

Deliver and partner with cultural heritage groups and other organisations to deliver culturally relevant activities.

Implement a rich and diverse program of arts and cultural initiatives and activities across a range of creative and performing art forms.

Projects 2023-24

- Albury Entertainment Centre - Digital Displays
- Albury Entertainment Centre - Grand Piano Replacement
- AlburyCity Museum and Social History Acquisition Fund
- AlburyCity Visual Art Acquisition Fund
- Alexandra Park Master Plan - Sports Field (Ian Barker) Reconstruction
- Billson Park Master Plan
- Building - Albury Entertainment Centre - Convention Wing Expansion
- Building - Albury Entertainment Centre - Sound and Lighting Equipment Upgrade
- Gateway Urban and Public Art Commissions
- Hockey Albury Wodonga - Design
- Lavington Sports Ground - Concourse Upgrade
- Library Book Stock Acquisition Fund
- Mountain Bike Audit and Strategy Implementation
- Pumphouse Creative Enterprise
- Riverside Precinct Public Art Work

Operating Projects and Programs

- Albury Entertainment Business Plan
- Conduct Library Museum Learning and Outreach Programs
- Write Around the Murray Festival
- Creative Economy Strategy Review
- Cultural Precinct Master Plan - QEII Square Improvements
- Deliver MAMA education programs

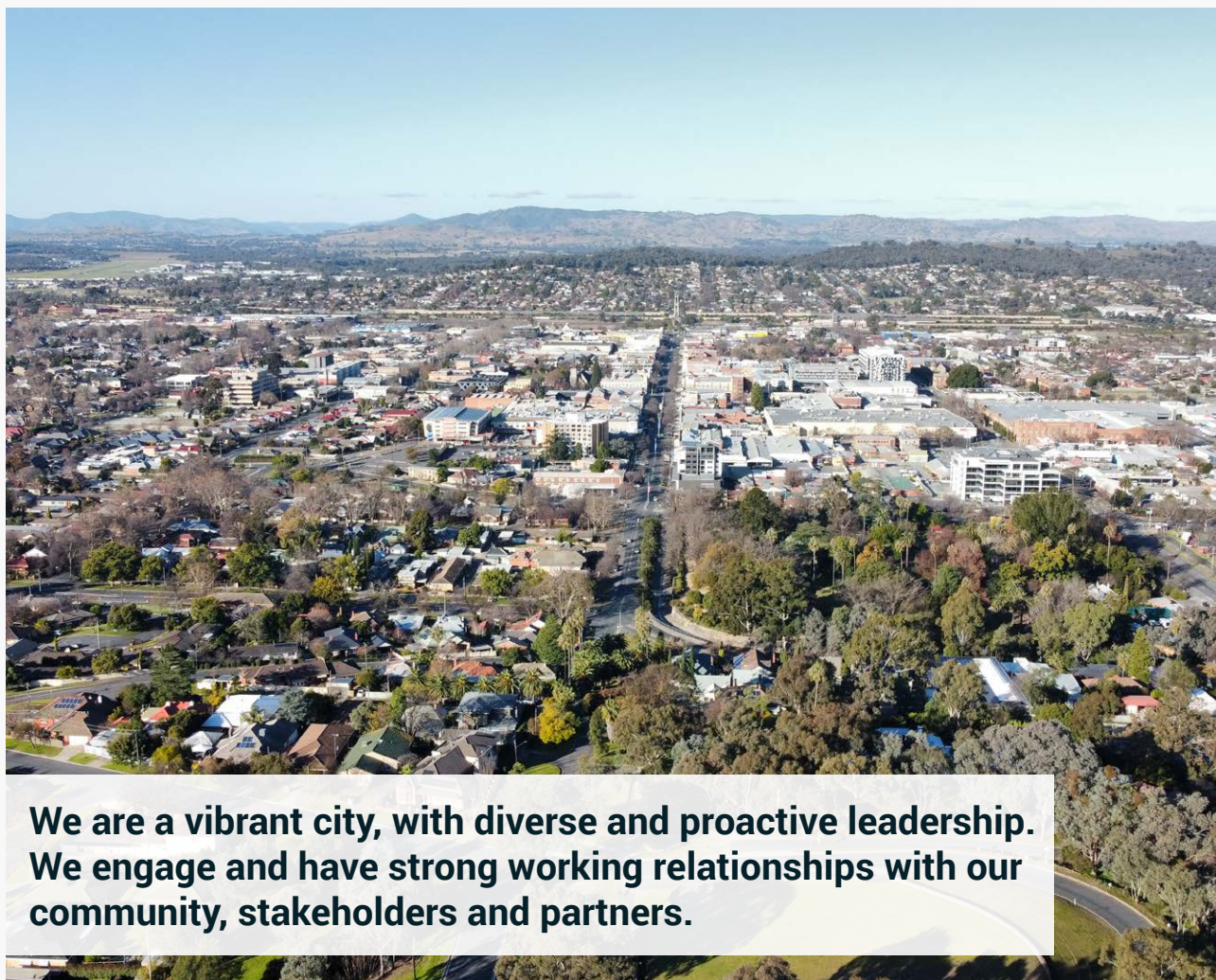
Operating Projects and Programs continued

- Implement Placemaking initiatives
- LibraryMuseum Exhibition Program
- Maintenance and cleaning of public art installations
- Mural and Street Art Program
- MAMA Collection Storage and Preservation Plan Development
- Present collaborative programs that connect AlburyCity with local cultural organisations
- Promotion of MAMA through local and national sponsor networks
- Pumphouse Creative Enterprise, Maker Space and Residency Program
- Review and implement the AlburyCity Events Strategy
- Summer Place Annual Commission





A Leading Community



4.1 Albury has strong partnerships so that the community's aspirations can be delivered through an integrated planning approach.

4 Year Delivery Program Principal Activities

AlburyCity will collaborate with local Aboriginal and Torres Strait Islander people to create leadership opportunities to improve outcomes for the wider community.

Continue to strengthen Council's capacity for collaboration and effective partnerships to deliver on our community aspirations.

Implementation of the Reconciliation Action Plan.

Operating Projects and Programs

- AlburyCity has representation on state, regional and other relevant forums
- Collaboration with regional education institutions

4.2 Albury collaborates as a community to plan for the future and work towards a shared vision.

4 Year Delivery Program Principal Activities

We will keep you informed, listen to and acknowledge concerns and aspirations, and provide feedback on how your community input influenced the decision.

We will continue to review and engage new and innovative technologies to allow inclusive engagement and conversations across all our owned digital channels.

Projects 2023-24

- Regional Partnerships and Innovation Projects
- Two Cities One Community - Communications Platforms

Operating Projects and Programs

- Monitor and improve AlburyCity Community Engagement Projects
- New AlburyCity Have Your Say Digital Platform

4.3 Albury is nationally recognised as a vibrant, innovative, collaborative cross-border community.

4 Year Delivery Program Principal Activities

AlburyCity strengthens partnerships and joint representation to address regional priorities and cross-border issues with an integrated approach.

Opportunities have been leveraged under the Two Cities One Community partnership.

Improve physical and digital access for the community to access a range of services.

Projects 2023-24

- Sensor Network Growth

Operating Projects and Programs

- Implement the Two Cities One Community Action Plan



4.4 Albury continues to have strong community leadership from a diverse range of backgrounds, driven by good governance.

4 Year Delivery Program Principal Activities

We will continue to support the development of community leaders through promotion and coordination of the Leadership and Resilience Scholarship.

We will provide strong governance and leadership to keep us future-focused and accountable for our decisions as an organisation of excellence.

We will create and drive opportunities for community leadership on issues of significance, such as establishing diverse Advisory Committees and working groups to inform Council decision making.

Projects 2023-24

- Building - Accessibility Upgrades
- Building Refurbishment - IT Elements
- Corporate Information Roadmap
- Customer Focused IT Service Delivery
- Cybersecurity Roadmap as part of Information Management Strategy
- Human Resource Information System
- Integration with NSW Planning Portal Program
- IT Infrastructure Roadmap - Capital
- Lavington Depot Building Works
- New AlburyCity Website
- Parking Sensor Network Extension
- Procurement, Contract Management and Payables Software Review
- Public Wi-Fi Phase 2
- Service Desk Roadmap
- Community Safety Plan Development

Operating Projects and Programs

- 2024 Local Government Elections
- AlburyCity Leadership Development Program
- AlburyCity Our Future Strategy 2031
- Business Systems IT Roadmap implementation
- Develop a Diversity and Inclusion Strategy for AlburyCity
- Develop and deliver the AlburyCity Corporate Training Plan
- Implement the Customer Experience Strategy
- Implement Workforce Management Strategy (Our People Strategy)
- IT Infrastructure Roadmap
- Grow Our Own Program
- Live Well Work Well Program
- Review and implement the Data Storage and Management Strategy
- Review and update the Corporate Risk Plan
- Service Excellence Program
- Triennial Employee Opinion Survey

New Initiatives Projects

A full list of 2023-24 projects can be found in our New Initiatives document published on our website.





Yindyamarra Sculpture Trail 2022. Artwork- The Bigger Picture. Artist- Katrina Weston. Photographer- Jeremy Weihrauch

AlburyCity

Operational Plan
2023-2024

553 Kiewa Street Albury NSW 2640

PO Box 323, Albury NSW 2640

P: (02) 6023 8111

E: info@alburycity.nsw.gov.au

W: alburycity.nsw.gov.au

📷 [@alburycity](https://www.instagram.com/alburycity)

